

HodgePodge Happenings

Long before 2011 drew to it's frosty close it was clear that Hodgepodge had experienced a banner year in terms of donations and in funds raised for Northland Hospice. These record sales enable us to provide enhanced services to our patients, their families and those in the community requiring support at times of grief.

The Hodgepodge Thrift Store

facebook



Danna Reiner and the Hodgepodge Manager, Peter Craven, diligently work on this year's inventory during an early morning!!!



Sandy Schaber, Judy Mautz, and Danna Reiner take a moment and pose for the camera during inventory day at The Hodgepodge!

We extend our sincere appreciation to all those who donate their time as volunteers, their treasures as donors or their support as customers. Without you we could not do this important work. You might never meet the people who are helped but be assured it means more to them than you can know.

Thank you,

Peter Craven, Hodgepodge Manager

Supporting Northland Hospice...
Flagstaff's Only Not-For-Profit Hospice
928-213-5775 | 2340 E. Route 66 Flagstaff, AZ 86004

SAVE THE DATE: May 21st Annual Golf Tournament at Pine Canyon

Our Annual Golf Tournament, held at Pine Canyon Golf Club, is fast approaching!

Last year's event was a huge success, and we hope that you can join us once again for this fun-filled festivity!

Auctions, food, friends, and most importantly, a fun round of golf attract local residents as well as valley residents looking for a beautiful day of golf in the cool pines of Northern Arizona!

Northland Hospice & Palliative Care

Administrative Offices

452 N. Switzer Canyon Dr., Ste. A

Flagstaff, AZ 86001

Phone: (928) 779-1227

Fax: (928) 779-5884

The Olivia White Hospice Home

752 N. Switzer Canyon Dr.

Flagstaff, AZ 86001

(928) 226-1915

www.northlandhospice.org



The Northland Star

Northland Hospice and
Palliative Care

Winter 2011-2012
Electronic Version

The Winter Edition

In an effort to be more environmentally responsible, Northland Hospice & Palliative Care offers the winter newsletter in this readable electronic version. Feel free to print your own from this online version, or you may request a hardcopy from our office at (928) 779-1227, and we will happily print individual copies for you to pick up.

The winter as well as the summer newsletters will be electronic versions, and the spring and fall newsletters will be distributed as both readable electronic versions and mailed-out hardcopies delivered to your mailbox. We hope you enjoy!

Recap: Light a Life 2011 *Brandon Porter, PR Specialist*

Phew!!! The Light a Life marathon is over! As a first timer to this annual Northland event, I was extremely impressed with everyone's support and generosity. This event provided those who have lost loved ones an opportunity to honor and pay tribute in a meaningful and charitable way.



This signature event once again raised thousands of dollars that go towards helping us provide outstanding end-of-life care to Flagstaff and nearby areas.

Donations fluctuated from day-to-day and weekend-to-weekend. But no matter the amount or circumstance, donors felt the need to contribute and always reached deep and gave what they could. Whether it was a widow giving \$500 in the name of her husband, or an eight year old girl giving \$1 for her recently lost dog, the generosity and humanity seen this year was moving.

A special Thank You goes to the Sue George and the Flagstaff Mall for not only allowing us to set up our event once again, but for also providing guidance and advice during the set-up of this event. Their patience and helpfulness was greatly appreciated.

Another Thank You goes to the Lite Company on 4th Street for hosting another tree, and for broadcasting our event on Yavapai Radio on December 16th. If any of you know the owners, Mike and Kathy Knapp, or any of their employees, you understand just how amazing they all are.

Thank you to the City of Flagstaff for hosting our annual Community Memorial Ceremony. That ceremony means a lot to many people, and we are honored to provide it to this community.

Thank you to Norvel Owens Mortuary on Route 66 for their generous sponsorship of this event. Northland Hospice appreciates not only their support with Light a Life, but also with their continued support of all things Northland Hospice.

Finally, thank you to our volunteers. Your help is vital to events like these, and they truly contribute to making our organization so great. I cannot say enough about how absolutely awesome you all are. THANK YOU!!!

A full list of all the Light a Life volunteers can be found on page 7

What's inside

A Message From the President: Joe Donaldson	2
OWHH Garden Update: Loni Shapiro	3
Wish Lists: Office, OWHH, Hodgepodge	4
A Furry Update: Murphy Hill, Therapy Dog	5
Northland Hospice: Award Winners 2011!	6
Megan Woodson: Volunteer Coordinator	6
List of Light a Life Volunteers 2011	7
Hodgepodge Happenings: Peter Craven	8



Upcoming Northland Hospice Events:

Patient Volunteer Training

February 23-25

Annual Golf Outing

Monday, May 21

Run For Life Race

Saturday, June 23

Look for us on

facebook

Northland Hospice Board of Directors

President: Joe Donaldson
VP: Kent Powell
Treasurer: Diego Rosalez
Secretary: Robert "Buck" Olberding
Members at Large:
 Eudora Larson
 Jean Mansfield
 Bob Norton

Northland Hospice Staff Directory

CEO: Diana Watt
Med. Director: Dr. Neal Mogk
Clinical Director: Joan Joyce
Social Work Manager:
 Roberta Armstrong
Bereavement Counselor
 Bess Petculescu
Volunteer Coordinator:
 Megan Woodson
Spiritual Counselor:
 Janetta Beaumont
Accounting Manager:
 Stephanie Bewley
Office Manager:
 Bobby Craven
Billing Specialist:
 Cynthia Daulton
Human Resources:
 Summer Lilly
Public Relations:
 Brandon Porter
OHH Manager
 Kellie Velde
OHH Manager & Quality Improvement Coordinator:
 Brittney Connelley
The Nursing Team
 Patti Kavanaugh
 Kris Sachara
 Heather Babbott
CNA:
 Sofia Abe
The Caregiver Team
Hodgepodge Manager:
 Peter Craven
Hodgepodge Assistant Manager:
 Chris Bowers

A Message from our new President, Mr. Joe Donaldson



Greetings everyone! I hope the new year is treating everyone well and you are off to a great start to 2012! My name is Joe Donaldson and I am the new Board President at Northland Hospice. I have been with hospice for many years, and I look forward to serving Northland in this new capacity.

I wanted to start off by thanking all of our volunteers. You truly have made 2011 a great year with all of your support. No matter how big or how small your contribution, we genuinely appreciate how much you care about this organization.

I also would like to take a moment to remind you that the Annual Golf Tournament at Pine Canyon (May 21st), as well as the Run For Life 5K/10K/1-Mile Fun Run (June 23rd) are coming up! Whether you join us a participant, volunteer, or general enthusiast, we really hope you keep us in mind!

Our Olivia White Hospice Home continues to provide excellent care to our patients as a unique setting for end-of-life patients. But what really makes it special are the comforting touches that are provided, such as decorating the house, or providing a great Holiday dinner. We strive to provide everything that our patients need and want.

On behalf of the Northland Hospice Board, I want to extend our warmest appreciation and welcome to the new year.

-Joe Donaldson

Northland Hospice presents the 14th annual
"Run For Life" 5K/10K Road Race

Save the Date!!!
Saturday, June 23rd, 2012
 Through the streets of Downtown Flagstaff!

Light a Life Volunteers (Continued from page 1)

Thank you to everyone who helped out this year. Whether you helped at the Flagstaff Mall, read names at the Memorial Ceremony, baked cookies for the bereaved families, or anything in between, your support is paramount to the success of our organization. We hope you continue to find it in your heart to support Northland Hospice in any capacity. *Thank You!!!*

- | | | |
|---------------------------------------|-----------------------------|--|
| Sharon Super | James Breazeale | Andy Rivera |
| Brittney Connelley | Terry Swatzell | Sister Elizabeth Carey |
| Sandy Hebel | Allyson Cwiekowski | Sarah Cromer |
| Dorris Paille | Megan Jerome | Donna Muhlenkamp |
| Buck Olberding | Noel Guevara | Jean Mansfield |
| Bob Norton | Dianne Hu | Sue Broyles |
| Diego Rosalez | Joy Brandt | Terry Gordon |
| Gail Mills | Kris Dalmolin | Sue Ruggles |
| Joni & Chaz Martinez | Peggy Sheldon-Scurlock | Eudora Larson |
| Joe & Janice Donaldson | Hollie Millican | Charlotte Garduno |
| Edie Lorton | Veronica Snyder | Kris Sachara |
| Sybil Smith | Julia Josefchuk | Sadie Oxtoby |
| Kent & Mary Powell | Randi Ferguson | Becky Daggett |
| Marianne Dougherty | Betty Hamilton | Summer Lilly |
| Connie Fry | Judy Mautz | Megan Callaghan &
The Threshold Choir |
| Ami & Brenda Berman | Lorene Miller | |
| Patti Kavanaugh | Roberta Armstrong | |
| Tina Winscott | Penelope Cook | |
| Don & Marcie Barnes | Megan Woodson | |
| Loni Shapiro | Dona Smedley | |
| Cynthia Davis | Donna, Anna, & Jesse Harmon | |
| Diana & David Arendt | Jerry & Julie Hatfield | |
| Lisa Smith | Eleanor Haglin | |
| Melanie Nelson | Joe & Nancy Gust | |
| Lee & Kay Treece | Chris Somerville | |
| Phyllis Houchin | Maria Montoya | |
| Ray Tamppari | Kathryn Wertz | |
| Kathy & Kevin Brown | Natasha Slaughter | |
| Cynthia Daulton | Amanda Berman | |
| Bobby & Peter Craven | Devon Shaeffer | |
| Madge Anderson | Troy & Pauline Blodgett | |
| Yolanda Gonzalez | Georgia Duncan | |
| Jennelle Staub | Fannie Williams | |
| Nancy Jordan | Bess Petculescu | |
| The Hurst Family (Ann, Rich, & Sadie) | Janetta Beaumont | |



FLAGSTAFF MALL & THE MARKETPLACE



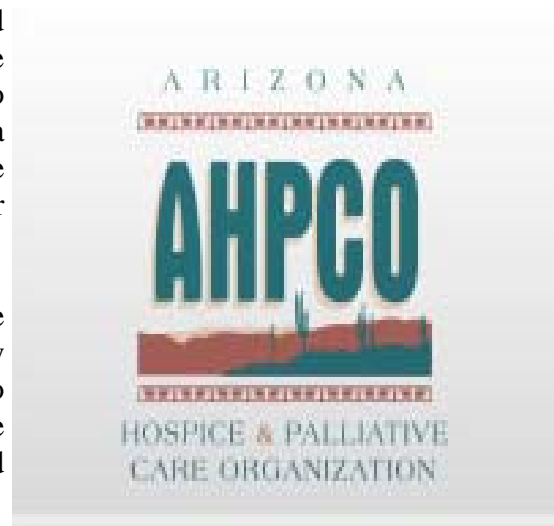
Norvel Owens Mortuary
 "Love Lasts Forever"



2011 Arizona Hospice & Palliative Care Award Winners

This Fall, Northland Hospice was nominated for an award based on quality of hospice and palliative care service. We at Northland Hospice and Palliative Care are proud to announce that we have been selected by the Arizona Hospice and Palliative Care Organization (AHPCO) as the winner of the "Excellence in End-of-Life-Care" award for 2011!

As an organization, Northland Hospice decided to recognize our volunteers as a whole. Our volunteers not only contribute with a great deal of time and effort, but they also contribute by raising awareness of hospice and palliative care. Congratulations to everyone involved with Northland Hospice, as you all help us provide outstanding service.



Megan Woodson, Volunteer Coordinator

Greetings Friends,

Happy New Year and Hello! Megan here, Volunteer Coordinator for Northland Hospice and Palliative Care. Our hospice volunteers have been a terrific support throughout the holidays, I first want to thank all those who have donated their time. Combining compassion with enthusiasm is what makes our volunteers a vital part of the Northland Hospice team and appreciated by those who receive their dedicated service. Olivia White Hospice Home has seen a great deal of community support this last holiday season: trick or treat guests, pumpkin donations, a holiday decorating party, and beautifully catered meals to enjoy with family and friends. Those who volunteer in patient's homes assisted in providing, much needed, respite for family members-creating a more peaceful holiday environment, what a gift!

With the New Year comes new opportunities to volunteer with Northland Hospice; we are always looking for thoughtful, caring people to join our volunteer community. Please contact me at (928-779-1227) if you would like to become a patient volunteer and I would be happy to give further information.

(The next volunteer training course is scheduled for February 23-25, which is required in order to become a patient volunteer)

Megan Woodson
Volunteer Coordinator



Megan and a few of her volunteers decorating The Olivia White Hospice Home for the Holidays



The Olivia White Hospice Home Garden in 2011 *By Loni Shapiro, Master Gardener*

Thank You from the Volunteer Gardeners at Olivia White Hospice Home

Thank you to all our regular volunteer gardeners (master gardeners & hospice supporters) for a very successful garden season. Each year our garden crew grows. This year we had 18 regular and 5 seasonal volunteers. Because of that, for a second year we were able to do a Plant and Garden sale. Additional thanks to those that continue to support us throughout the year with their generous donations of materials and time. Warner's Landscape and Nursery continued with an 8th year of 10% of proceeds day for Olivia White Hospice as well as discounts for purchases. The Flagstaff Leadership Program held a fundraiser for us at 1st Friday Artwalk, and spent a day in the garden helping us get the season started. The Bountiful Alliance foundation awarded another grant to continue to develop a garden to honor Michael Moore (writer and naturalist). Work on the Native Medicinal Garden began in 2010 and will continue in 2012. Last of all Dave & Terri Hill continued their generous support of the gardens by donating arbors and fencing for a new garden entry. We had our usual group help from the community (AmeriCorps, Northland Prep Academy, and Flagstaff High Honor Society), and individual donations by many families who utilized services offered in the home. One family made an unusual donation. They donated a 100 year old lilac that came all the way from back east. It was dug up by two of our gardeners from the former resident's yard and replanted in front of the home. The family also added a dedication sign and some rock that came from Iowa.



Northland Preparatory Academy helping with the annual Fall Cleanup



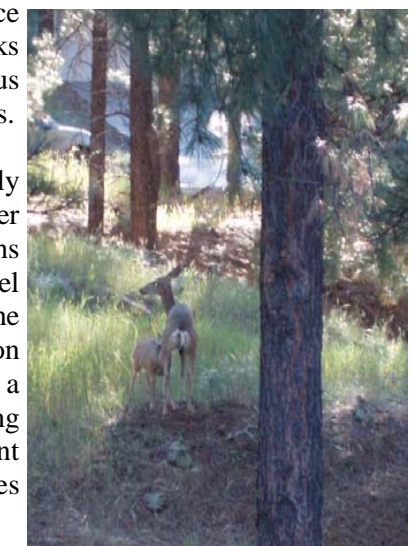
Zane's Garden in June

Because of the generous support from the community we were able to purchase a large shed, some new composters and wheelbarrows in addition to our plant material. We added one new garden and revamped an old garden from 2002. In May the new garden was dedicated to our long time therapy dog Zane. It is backed by our birdhouse trellis which now has a small memorial brick area dedicated to pets. Zane's successor Murphy was in attendance at the dedication along with many friends. Thanks also go to Dana Prom Smith who reminded us about the importance of dogs (pets) in all our lives.

We begin our season in January with monthly planning meetings until April when weather permitting we began cleaning up the garden. Plans for 2012 include continuing work on the Michael Moore Native Medicinal Garden, working with the city on redoing our Turquoise and Switzer Canyon corner garden after they add a FUTS trail, a summer plant and garden sale, and some updating of the gardens in front of the home. Come join us if you like to garden, or just want to learn. Watch our blog (www.owhospicegardenvolunteers.blogspot.com) for dates and beginning orientation to the gardens.

Flagstaff thank you again for your generous spirit!

-Loni Shapiro and the Gardeners at the Olivia White Hospice Home



Two of our regular visitors

Wish lists: Northland Hospice, The Hodgepodge, & The Olivia White Hospice Home

As Flagstaff's only non-profit hospice, and one that has been around since 1983, Northland Hospice is so grateful for all the support that this community provides. We are always in need of everyday supplies to help us keep operating costs down. By doing so, precious funds are diverted away from supply costs and go towards helping our patients and families even more so.

Below are just some of the basic items that we are currently in need of, should you want to help "fill the wish list."

Olivia White Hospice Home Wish List

- Any craft items for afternoon activities
- Fingernail clippers
- Manicure sets
- New/unused combs and brushes
- Toothpaste
- New/unopened toothbrushes
- Sauce pans
- Place mates for the kitchen table
- Hand blender-for soups
- Potato Masher

Administrative Office Wish List

- Scotch Tape
- Stamps
- Boxes of 20lb and 22lb paper stock
- Office supplies of any type
- Gift Certificates

Hodgepodge Thrift Store Wish List

- Any kind of donations to sell
- Tape
- Bags for shoppers' purchased items
- Durable office supplies

If you are interested in helping make our wishes come true by making a contribution of any type, please contact Brandon Porter at (928) 779-1227, or bporter@northlandhospice.org.



A special Thank You goes out to New Frontiers of Flagstaff for awarding us with their "5% Wednesday" fundraiser. On Wednesday, December 21st, 5% of all sales at New Frontiers went directly to Northland Hospice.

Considering their high volume of business, New Frontiers donated a sizeable amount to support our services. For this, we are so grateful that such a great business in town continues to give back to its community.

Thank You!

-Northland Hospice & Palliative Care



Approved

A Winter Update on Dave and Murphy

The previous newsletter that we published (Fall 2011) included a wonderful article submitted by Terri and Dave Hill about their past therapy dog, Zane. Due to all of the great feedback and interest, we wanted to give an update on the Hill's and their current therapy dog, Murphy.

Dave and the late Zane served Northland Hospice for six years before an illness took Zane away from us on Christmas Eve, 2010. There are reminders of Zane all over Northland Hospice. A pet memorial garden at Olivia White honors Zane, while a majestic photo of Zane in Sedona hangs near the front door of the administrative offices.

While Zane can never be replaced, Murphy Hill has humbly stepped in as the Hill's Delta Certified pet therapy Golden Retriever. Northland Hospice and the Olivia White Hospice Home are fortunate enough to have Dave and Murphy gracing our days.



Murphy Hill, enjoying some wonderful Northern Arizona snow!



Murphy came by for a play-date with Fifa! Fifa is Brandon's (PR Specialist), new puppy!

Dave, Terri, and Murphy are currently residing in their winter home in Cottonwood, but do still make the trek up to Flagstaff to volunteer at The Olivia White Hospice Home. Keep an eye out for Dave and Murphy if you're ever around Northland Hospice, and don't be surprised if you get a big, wet kiss from our four-legged volunteer!

Dave and Murphy, we can't wait to see more of you guys in the Spring and Summer!

-Northland Hospice